

Slow-Close Resin Toilet Seat Installation

TOOLS NEEDED



PARTS LIST



Mounting
Ring
(2x)



Rubber
Sleeve
(2x)



Washer
(2x)

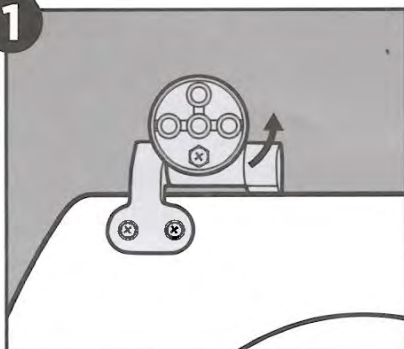


Nut
(2x)



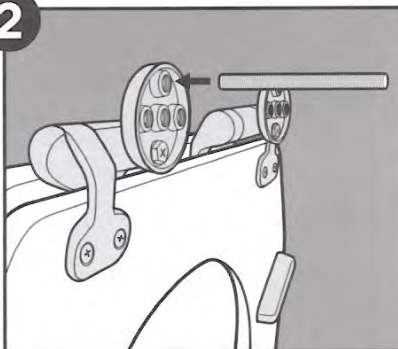
Bolt
(2x)

1



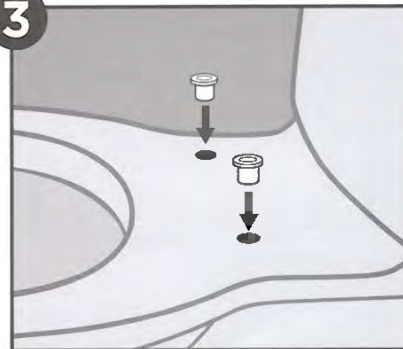
Loosen screw and rotate Hinge Mount as shown above. Tighten screw. Repeat on the other hinge.

2



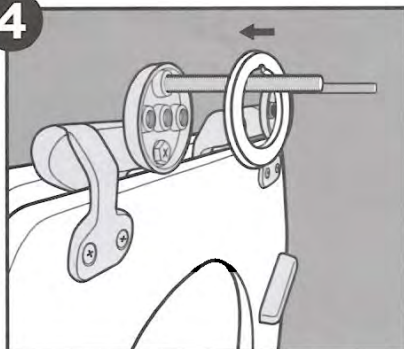
Screw Bolt into the top hole of the Hinge Mount as shown.

3



Insert the Rubber Sleeves into the toilet bowl mounting holes.

4



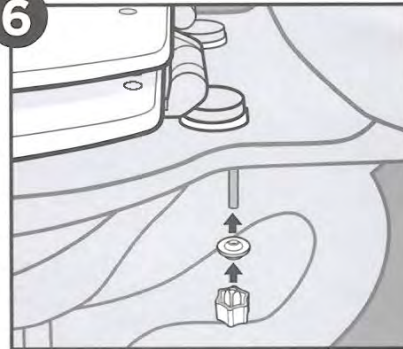
Place the Mounting Rings onto the Hinge Mounts. The notch in the ring must line up with the bolts as shown.

5



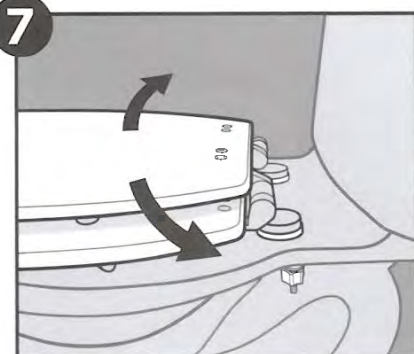
Hold the Mounting Rings to the Hinge Mounts with your fingers as you lower the bolts through the mounting holes.

6



Secure the Washer and Self-Aligning Nut to the Bolt from below by turning clockwise. Finger tighten only.

7



Check alignment and fit of the toilet seat. Fully tighten. You can use pliers to tighten the nut if needed.

Use Instructions:

Tighten nuts again after seat has been in use for several weeks.

Care Instructions:

Clean with soft, damp cloth using mild detergent.
Do not use abrasive cleaners.

ginsey
home solutions

© 2021 All rights reserved.
Ginsey Home Solutions
2078 Center Square Road,
Swedesboro, NJ 08085
www.ginsey.com
MADE IN CHINA

Customer Service is available
8:30am – 5:00pm (EST)
Monday – Friday
1-800-257-7844
service@ginsey.com