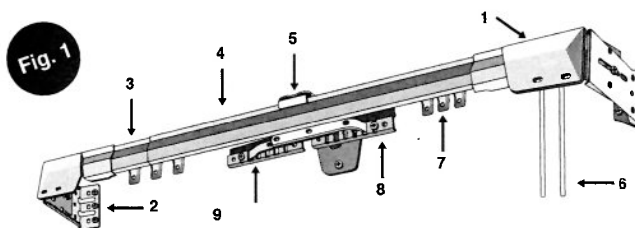


## INSTALLATION INSTRUCTIONS FOR CENTER OPEN SINGLE TRAVERSE ROD (Drop In)

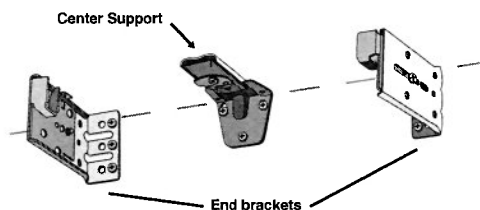
### PARTS LIST

1. Pulley Housing
2. Bracket
3. Inside Section of Rod
4. Outside Section of Rod
5. Center Support
6. Cord
7. Slide
8. Overlap Master
9. Under Master (center open only)

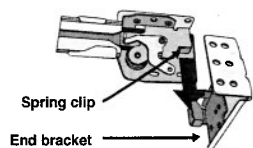


- 1 MOUNTING INSTRUCTIONS:** Wall mount option- Mount the two end brackets to the wall at desired location. No center support is needed for installations less than 50" long. Ceiling mount option- If rod is to be installed to the ceiling, attach pulley housing (without brackets) and stirrup portion of center support directly to the ceiling.
- NOTE:** IF USING AS A ONE WAY DRAW, INSTALL ONE SUPPORT BRACKET ON OPEN END OF ROD.

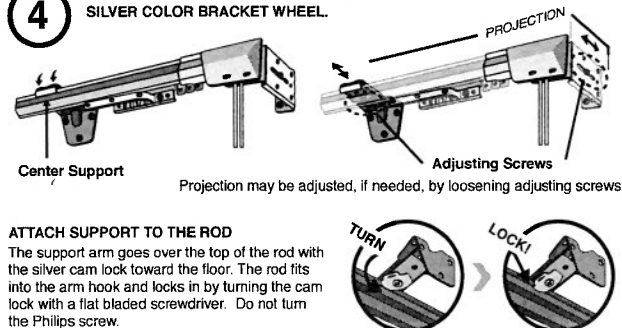
- 2 FOR RODS FULLY EXTENDED TO 50" OR MORE, INSTALL CENTER SUPPORT.**



- 3 INSTALL ROD INTO END BRACKETS:** drop end of rod into the u-shaped clip of the end bracket. To remove rod from bracket simply lift the rod out of the u-shaped clip.



- 4 ATTACH ROD INTO CENTER SUPPORT BY TURNING SILVER COLOR BRACKET WHEEL.**

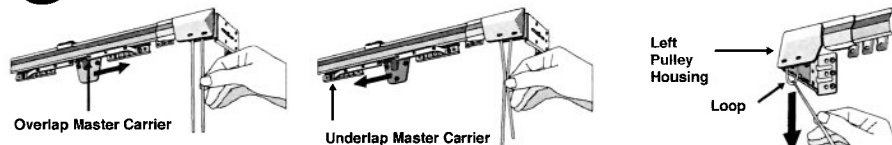


### ATTACH SUPPORT TO THE ROD

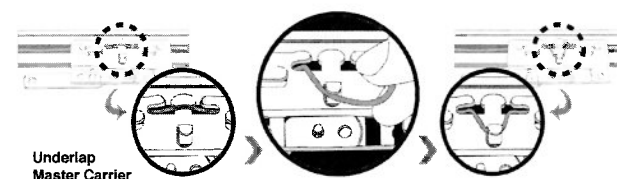
The support arm goes over the top of the rod with the silver cam lock toward the floor. The rod fits into the arm hook and locks in by turning the cam lock with a flat bladed screwdriver. Do not turn the Philips screw.



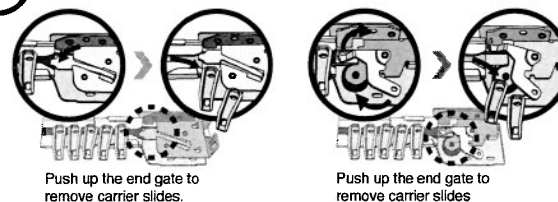
- 5 TO MAKE SURE DRAPERIES CENTER CORRECTLY,** pull draw cord as far right as it will go to move the Overlap Master Carrier to the end of the rod. Then holding both cords securely, push Underlap Master Carrier as far to the left as it will go. Lock the cord by looping it under the locking tabs at the back of the Underlap carrier.



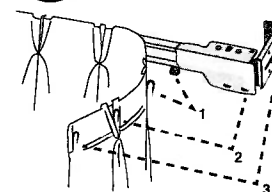
- 6 RODS ARE PRE-STRUNG WITH CORD LOOP ON THE RIGHT.** They may be converted to cord loop on the left by simply hooking the cord and pulling it out from inside the left pulley housing and pulling the loop all the way out.



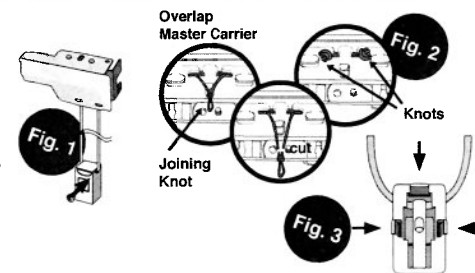
- 7 REMOVAL OF UNUSED CARRIER SLIDES**



- 9 HANG DRAPERIES**

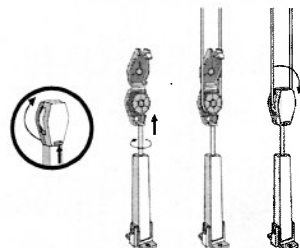


- 8 CHILD SAFETY CORD GUIDE: RODS WILL NOT WORK PROPERLY WITHOUT GUIDE INSTALLED** Guide is pre-attached to the cord. Mount the guide to the wall at the desired height using the included screw. Tighten the screw until the cord slides through the device freely. (See Fig. 1) Remove excess slack on the cord by grasping and pulling down on the knot that is on the back side of the master carrier. Pull the knot into the cord as close as possible to the master carrier and cut off the excess cord. (See Fig. 2) **CHILD SAFETY CORD GUIDE REMOVAL:** Pry open the three clips on the back of the device. (See Fig.3) Split the guide open and remove the cord guide.

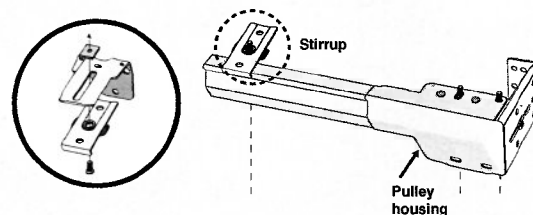


### SPECIAL INSTRUCTION

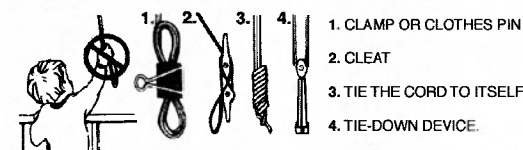
- 1. TENSION PULLEY OPTION:** can be mounted to the wall or floor. After securing Tension Pulley to desired location, loop cord onto pulley wheel. Grasp cord joining knot behind Master Carrier and pull out enough cord to take up slack between the rod and the cord tension pulley. (Fig. 2) Retie knot as close to the Master Carrier as possible then cut off excess cord beyond knot. Rotate pulley head until cords are in proper alignment and release into pulley base.



- 2. CEILING INSTALLATION.** If rod is to be installed to ceiling, attach pulley housings (without brackets) and stirrup portion of center support directly to ceiling.



**WARNING**  
TO AVOID POSSIBLE STRANGULATION, KEEP CORDS OUT OF REACH OF CHILDREN. USE THESE DEVICES:



NOTE: As desired, the curtain stack may be on opposite end from the cord draw.

First, complete the conversion of the rod for desired cord left or cord right operation as listed (above).

1. Pull the rod apart so that there is about 4" of gap between the inner and outer rod halves.
2. Remove the under-lap master carrier.
3. Move the overlap master carrier to the middle space between the rod halves.
4. Move all needed sliders to the side of the rod where the curtain stack will be when the curtain is open.
5. Slide the master carrier into the side of the rod where the curtain stack will be when the curtain is open.
6. Slide the rod halves together.
7. Pull the cord tight with the master carrier and carriers pushed into the stack position.
8. Master carrier arm should point away from curtain stack. If you want curtain stack on left side when curtain is open, loosen the master carrier arm screw, reverse master carrier arm, re-tighten arm screw.

---

### **MOUNTING THE ROD INTO THE MOUNTING BRACKETS**

1. Attach the tension device on the wall as desired.
2. Place the rod into the mounting brackets, tighten any bracket screws.
3. While holding the master carrier in position, pull the knot out of the master carrier until the cord is snug. Insure that the cord is still looped through the tension device.
4. Re-tie the knot so that the cord is tight at the master carrier.

### **YOUR ROD INSTALLATION IS COMPLETE**

You are now read to hang the curtain onto the rod. Start the install at the master carrier and finish at the stack side.

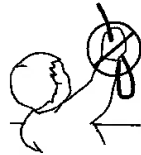
---

1



## WARNING

Young children can **STRANGLE** in cord and bead chain loops. They can also wrap cords around their necks and **STRANGLE**.



- Always keep cords and bead chains out of children's reach.
- Move cribs, playpens and other furniture away from cords and bead chains. Children can climb furniture to get to cords.
- Attach tension device to wall or floor. This can prevent children from pulling cords and bead chains around their necks.

For more safety information:

1-866-662-0666.