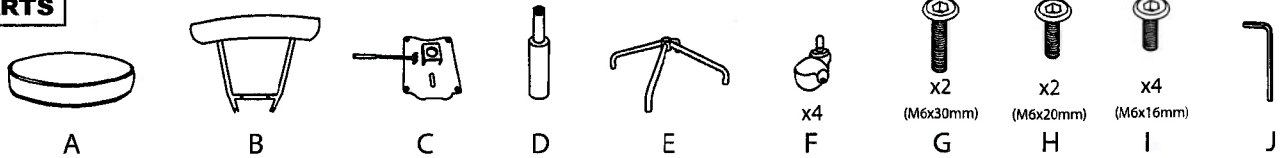
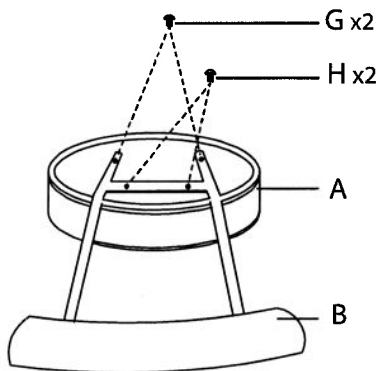


# Assembly Instructions

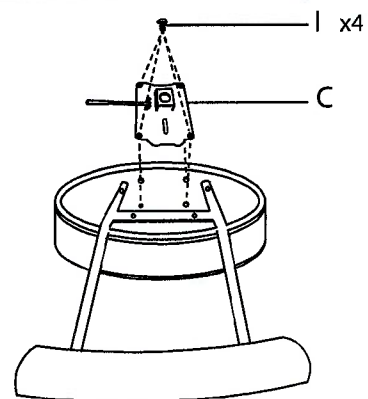
## PARTS



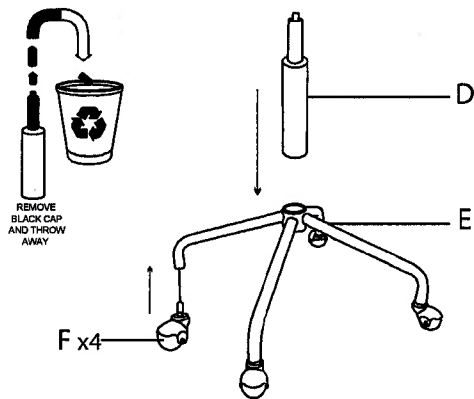
**1**



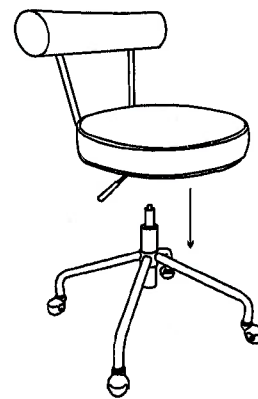
**2**



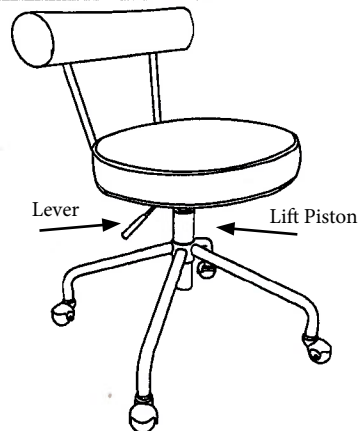
**3**



**4**



**5**



To activate the Lift Piston (Part D), apply weight by sitting in the chair; raise the seat using the lever.



Do not over tighten.  
Do not use power tools to assemble.

[www.LumiSource.com](http://www.LumiSource.com)

TOC20241031