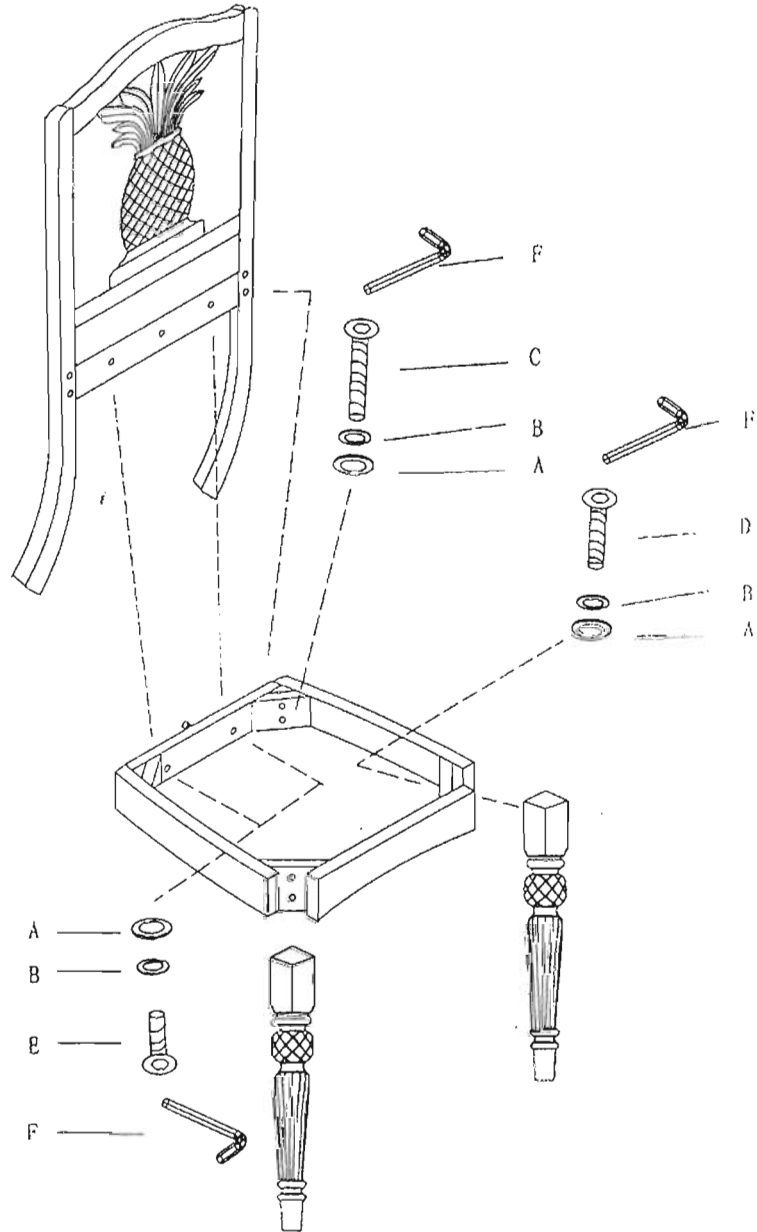




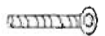
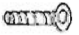





Assembly Instruction

Style : 1685 Chair

Step 1 : screw the
frame into the back

Step 2: Screw the legs to
the frame.



A		$\phi 5/16'' \cdot 22\text{mm}$	10 pcs
B		$\phi 5/16''$	10 pcs
C		$\phi 5/16'' \cdot 3-1/4''$	4 pcs
D		$\phi 5/16'' \cdot 2-1/2''$	4 pcs
E		$\phi 5/16'' \cdot 1-1/2''$	2 pcs
F		5mm	1 pc
G			1 pc
H			1 pc
I			2 pcs