

MID-TOWN TABLE

Model #4596-840 Bistro Table
Model #49021 Glass Top

Date: 06-23-05

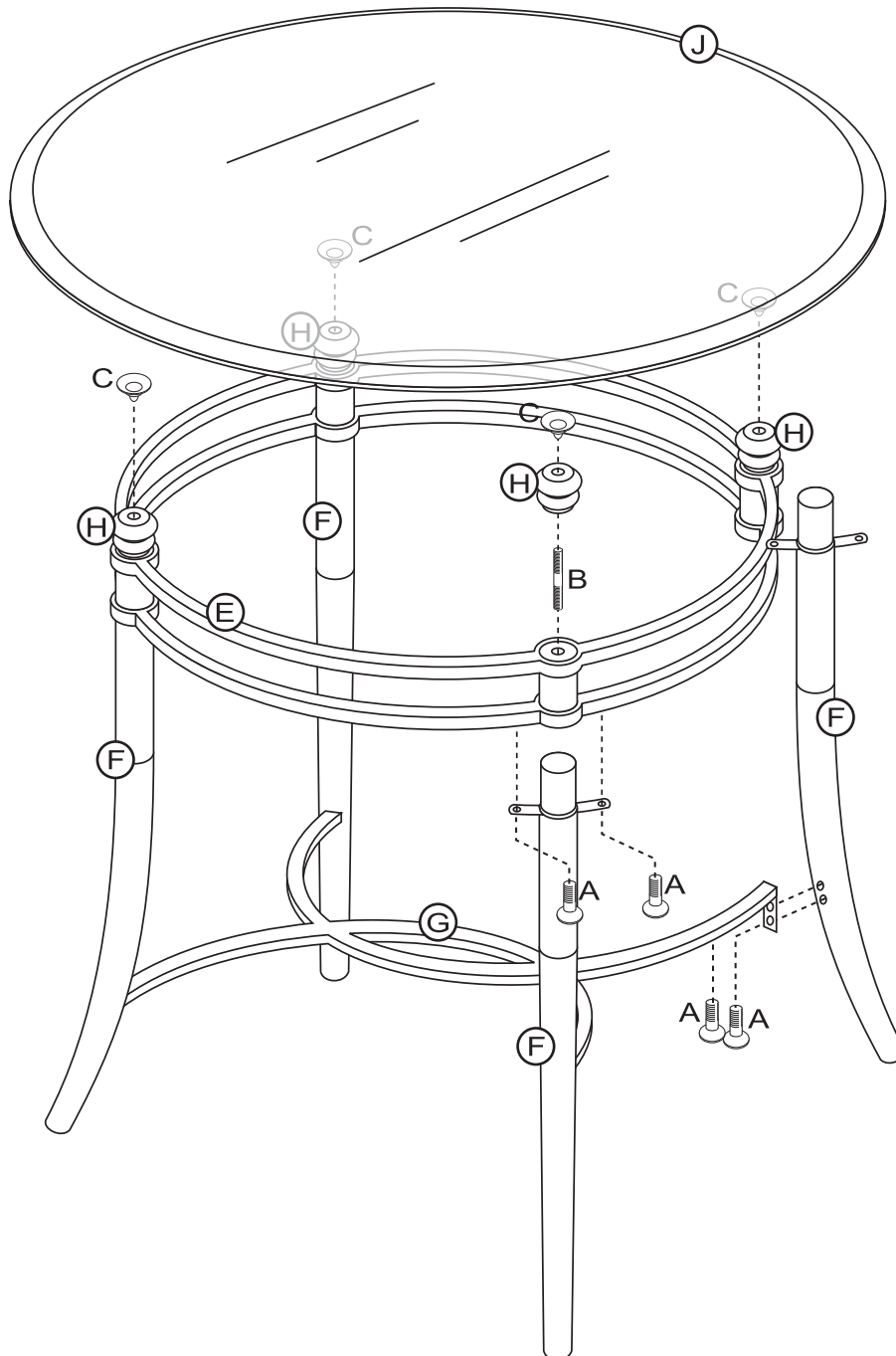
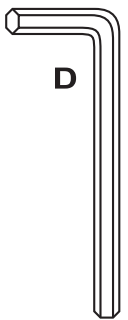
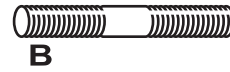
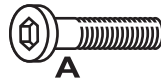
Examine all packaging material for small parts that may have come loose during shipment. Periodic checks are recommended to insure that all components are in proper position, tight and free from damage. Keep this assembly instruction for future reference. Adult assembly required. Online Parts Request: parts.request@hillsdalefurniture.com - Customer Service Phone Number: 502-562-0000

HARDWARE LIST

- A (16) Allen Bolts
- B (4) Threaded Rods
- C (4) Suction Cups
- D (1) Allen Wrench

PARTS LIST

- E (1) Table Base
- F (4) Legs
- G (1) Cross Brace
- H (4) Table Finials
- J (1) Glass Top



STEP 1

Begin assembly by first attaching each Leg (F) to Table Base (E) using 2 Allen Bolts (A) per each leg. Only hand tighten bolts for this step.

STEP 2

Next, attach Cross Brace (G) to each Leg (F), using 2 Allen Bolts (A) per each leg. Tighten all bolts from Steps 1 & 2 for this step, only using the Allen Wrench (D) provided.

STEP 3

Insert each Threaded Rod (B) into pre-drilled hole in top of Table Base (E). Once in place, firmly screw each Table Finial (H) into place by hand only. Do not overtighten to avoid stripping of the threads. Insert one Suction Cup (C) into each hole in finial.

STEP 4

Finally, carefully center Glass Top (J) onto Suction Cups (C) using the help of a friend. The assembly is now complete.

CARE & MAINTENANCE: The touch of a soft cloth is all the maintenance the finish will ever need. Please do not use harsh or abrasive cleaners for polishing, as they may cause damage to the finish. Periodic checks are recommended to make sure that all bolts, screws and nuts are securely tightened.